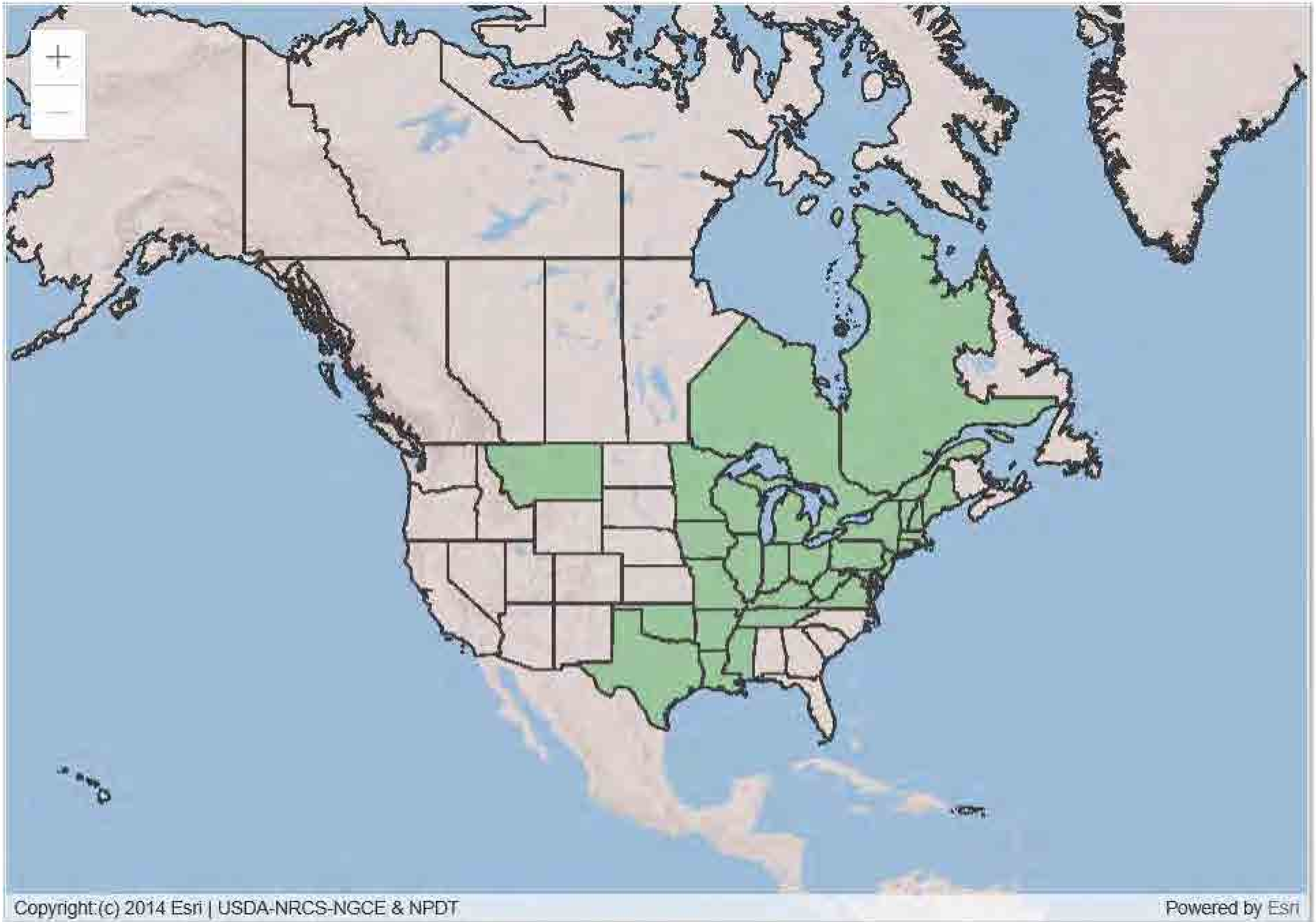


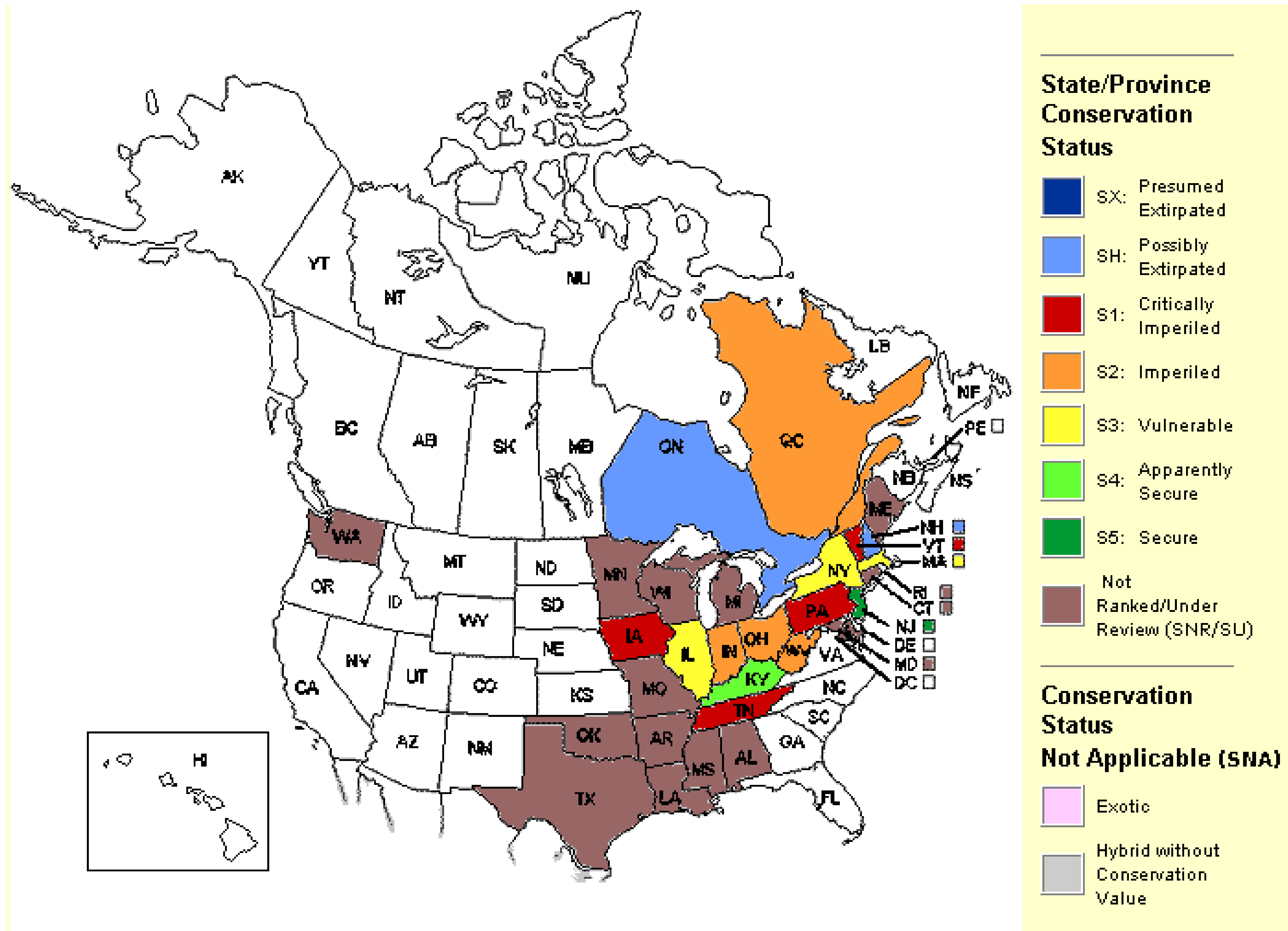
# USDA PLANTS

## *Sparganium androcladum*



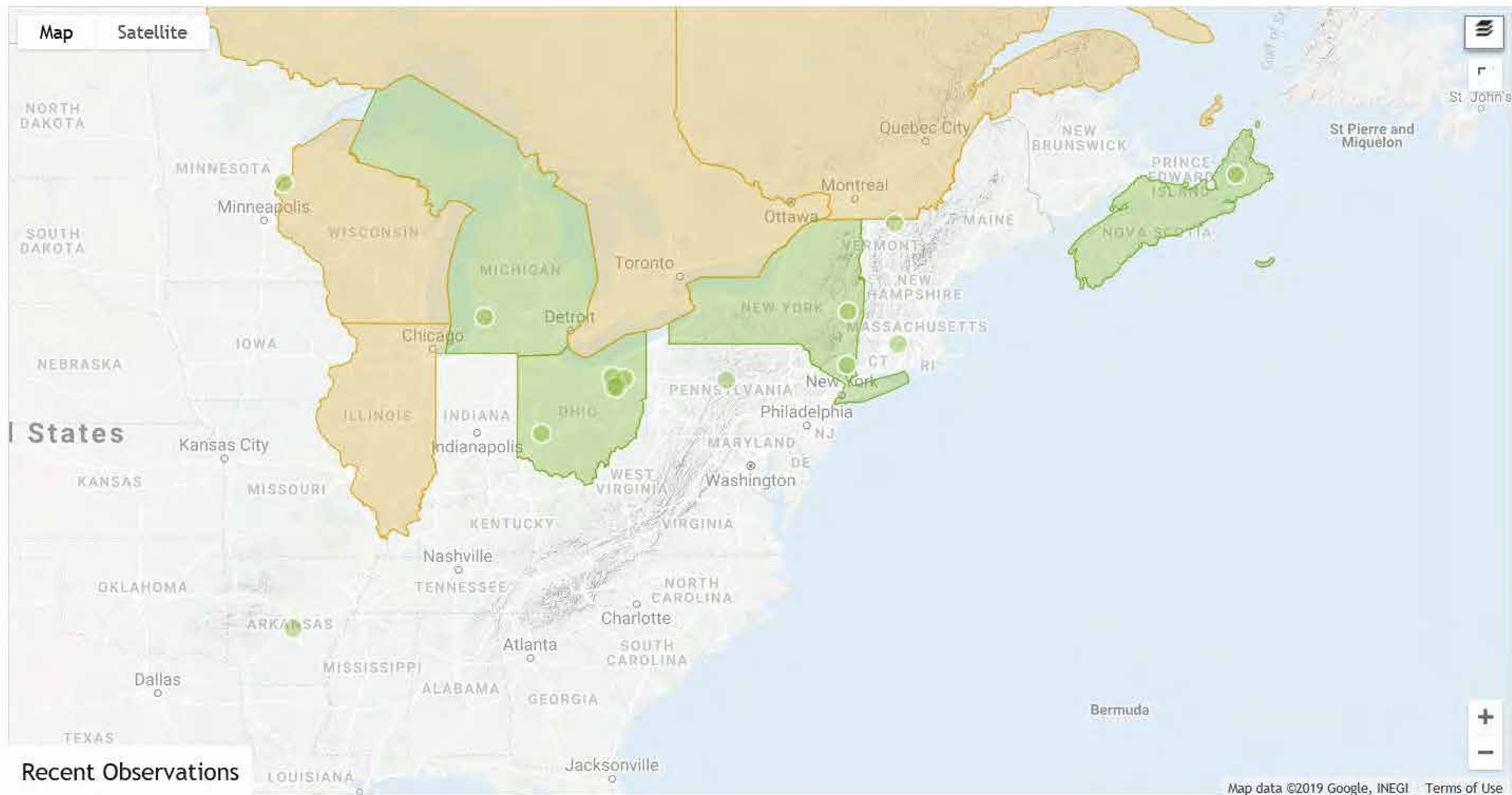
# NatureServe

## *Sparganium androcladum*



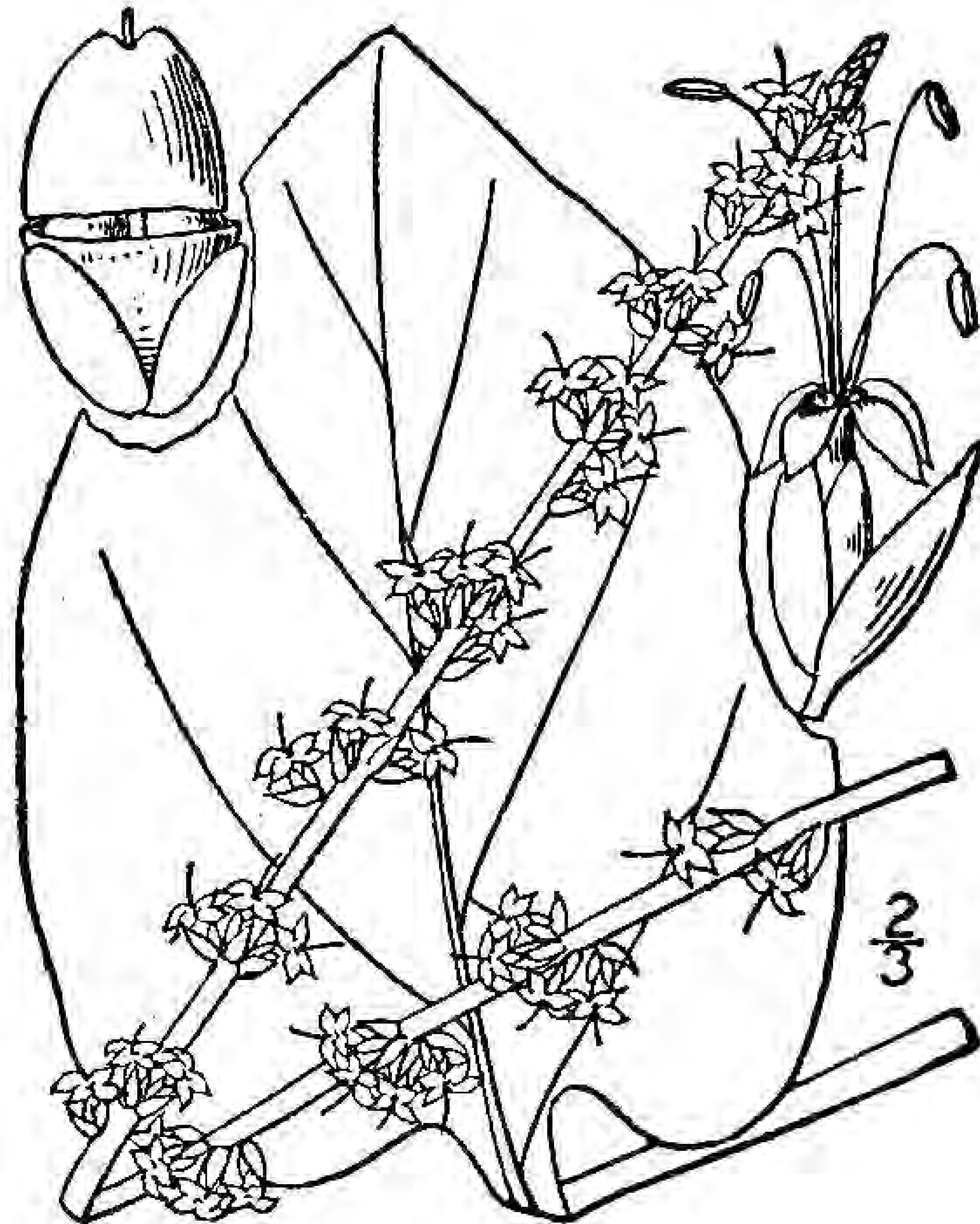
# iNaturalist

## *Sparganium androcladum*





# *Plantago cordata*





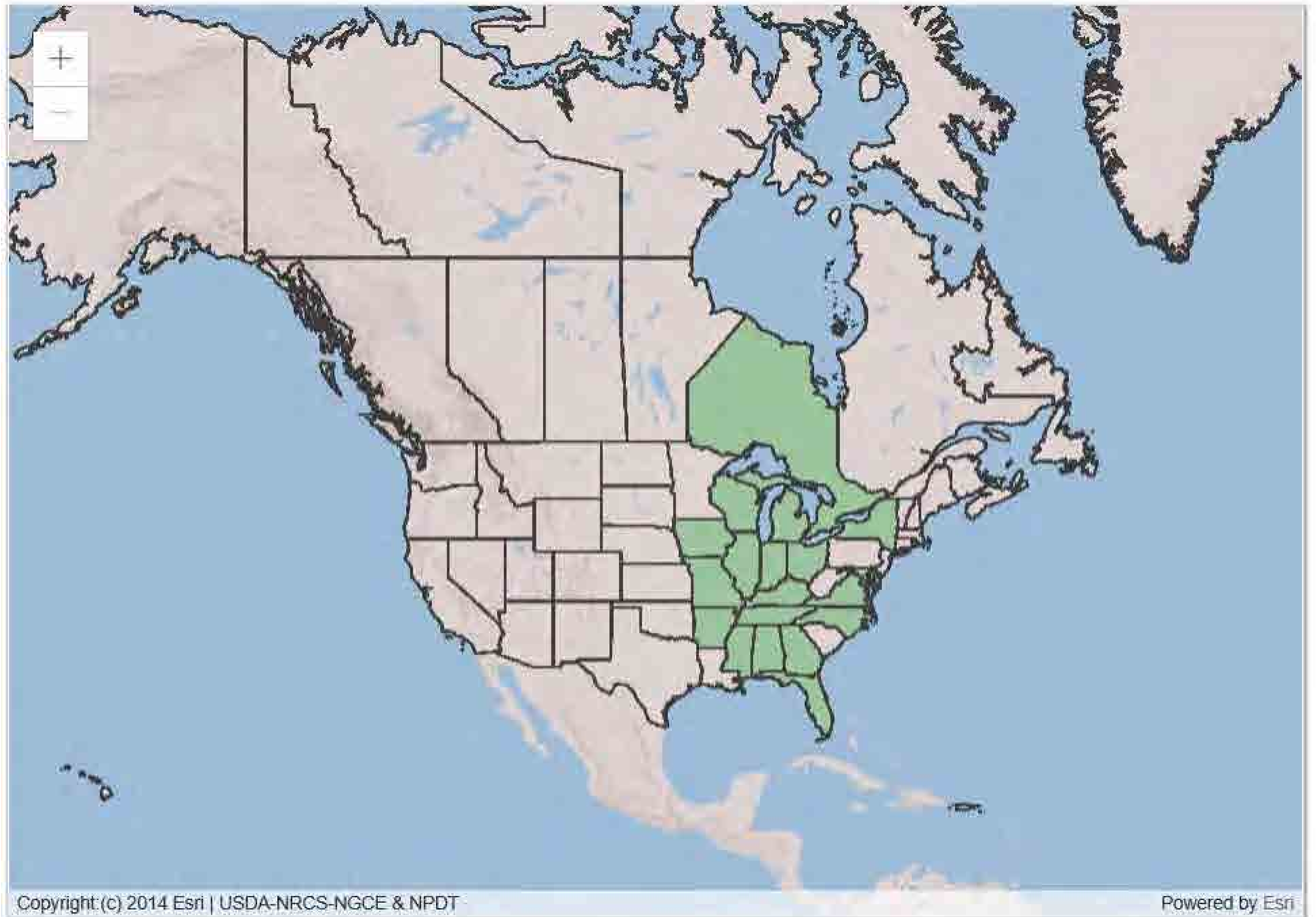






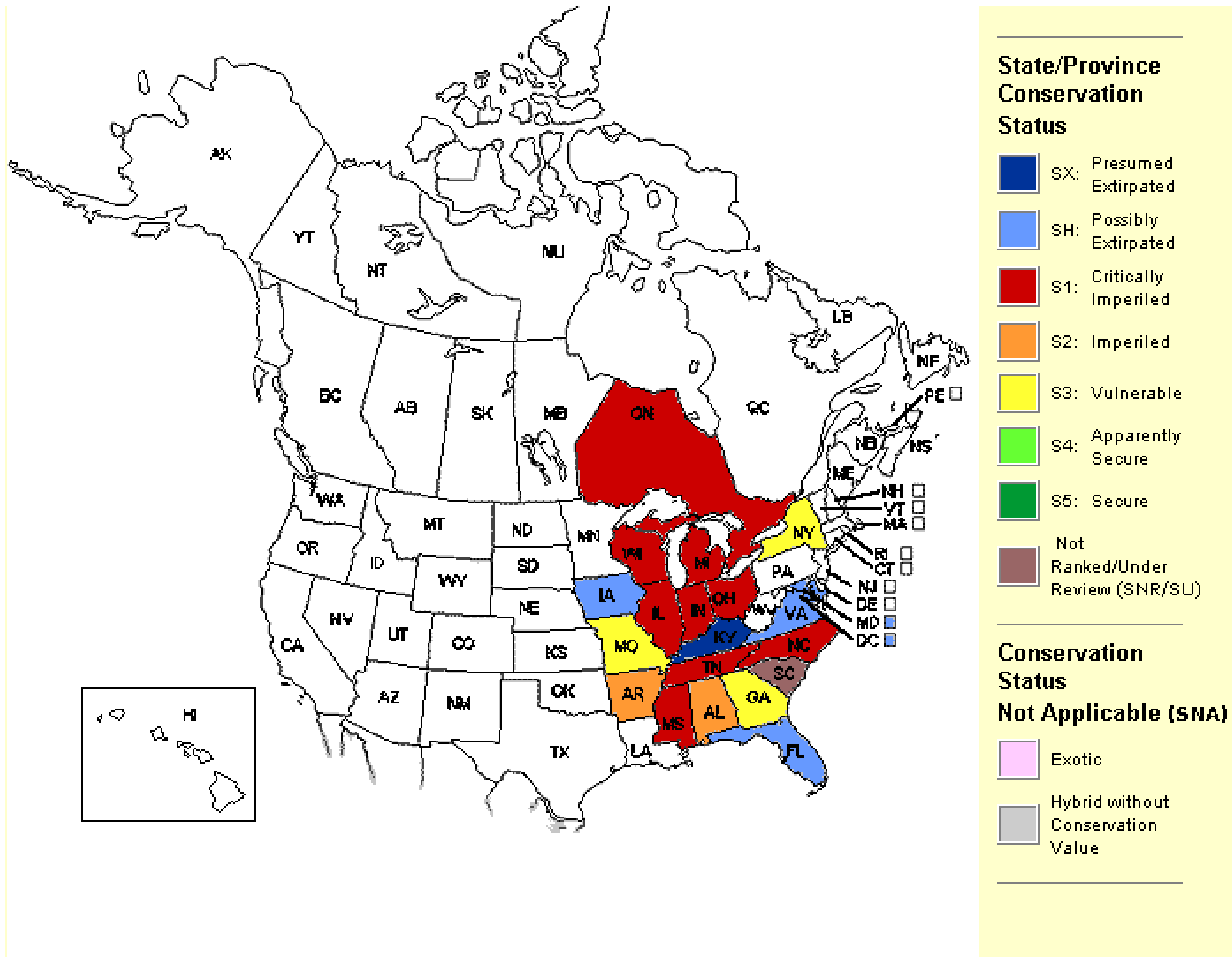
# USDA PLANTS

## *Plantago cordata*



# NatureServe

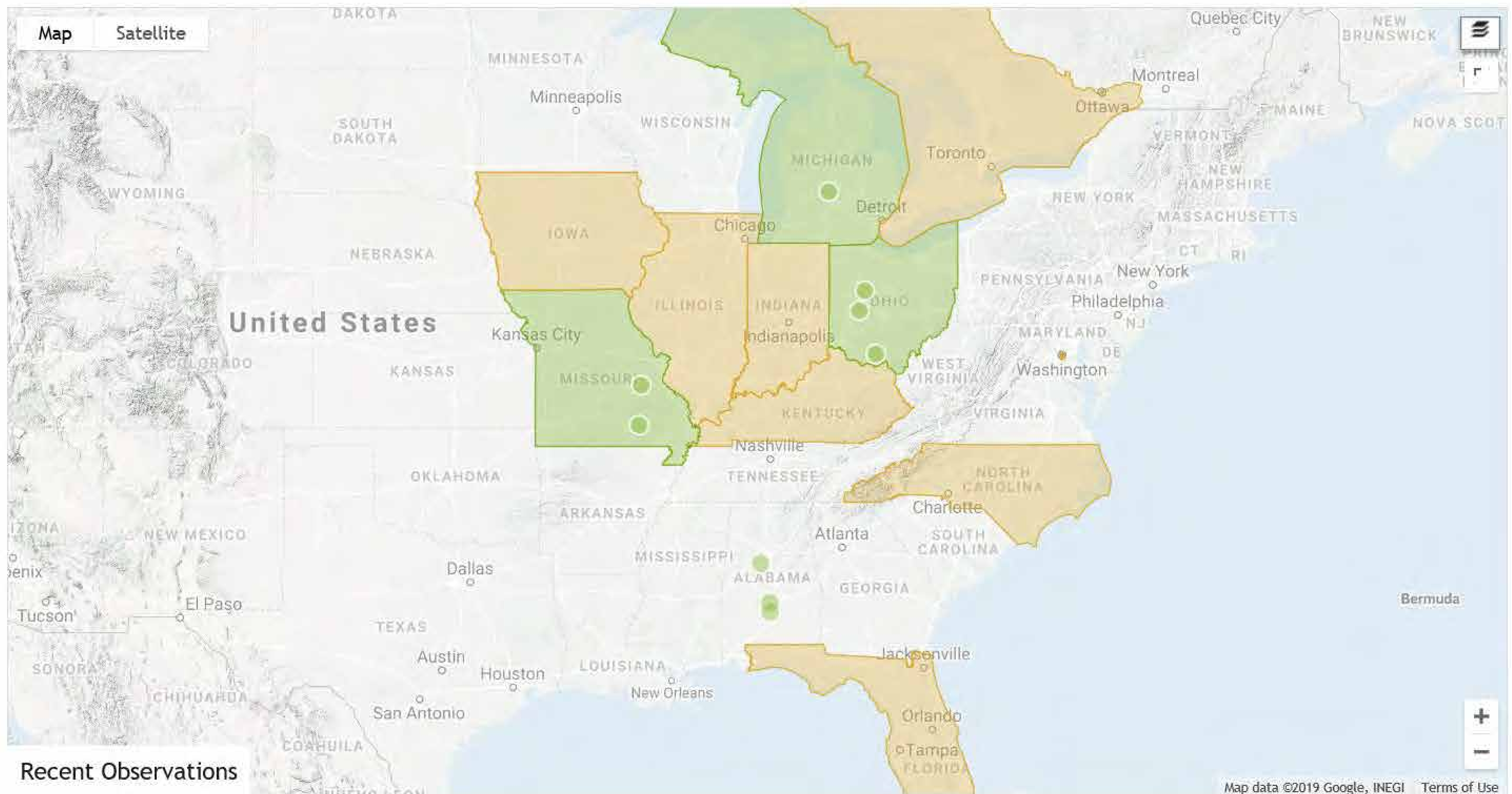
## *Plantago cordata*





# iNaturalist

## *Plantago cordata*





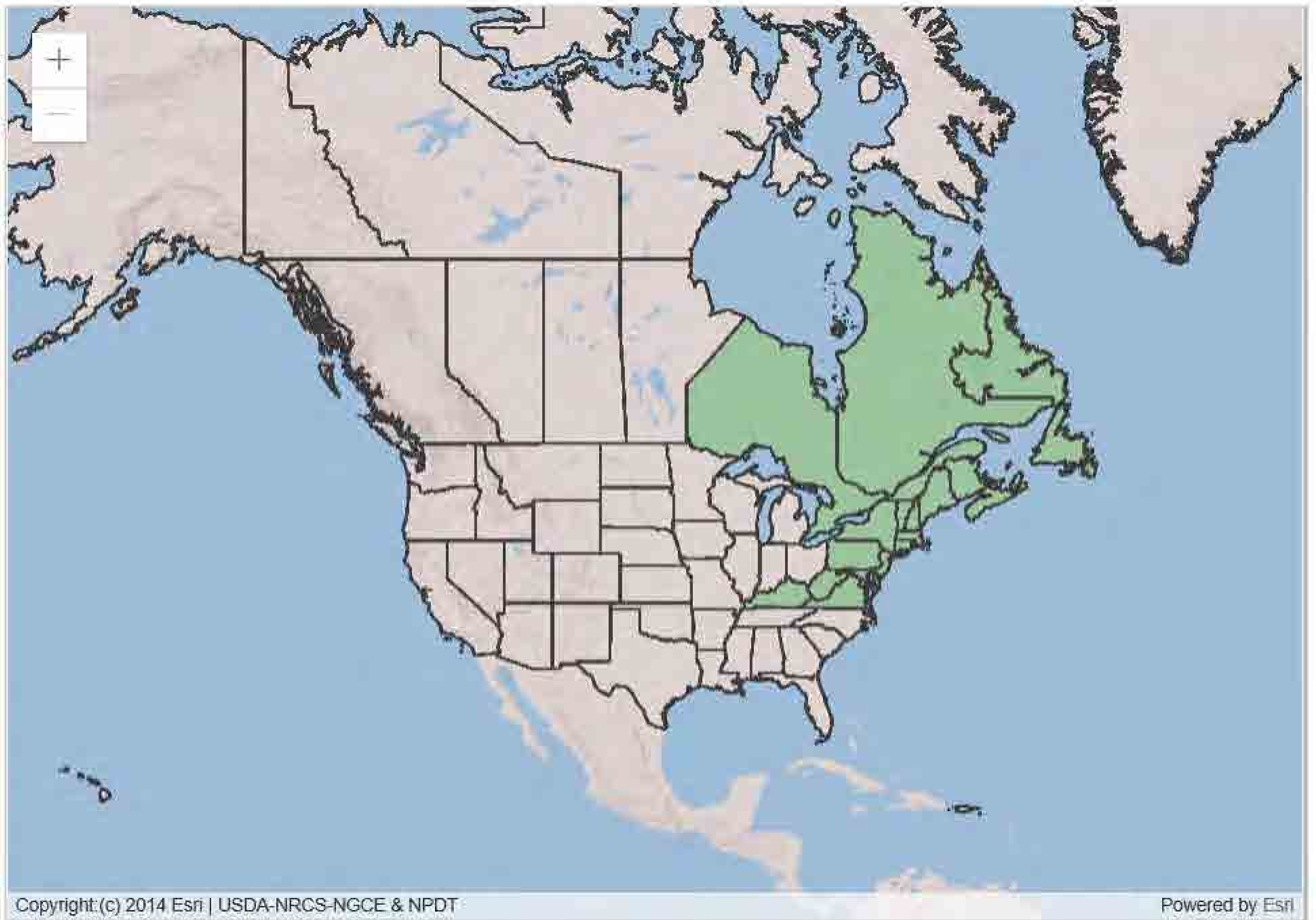
# *Eurybia radula*





# USDA PLANTS

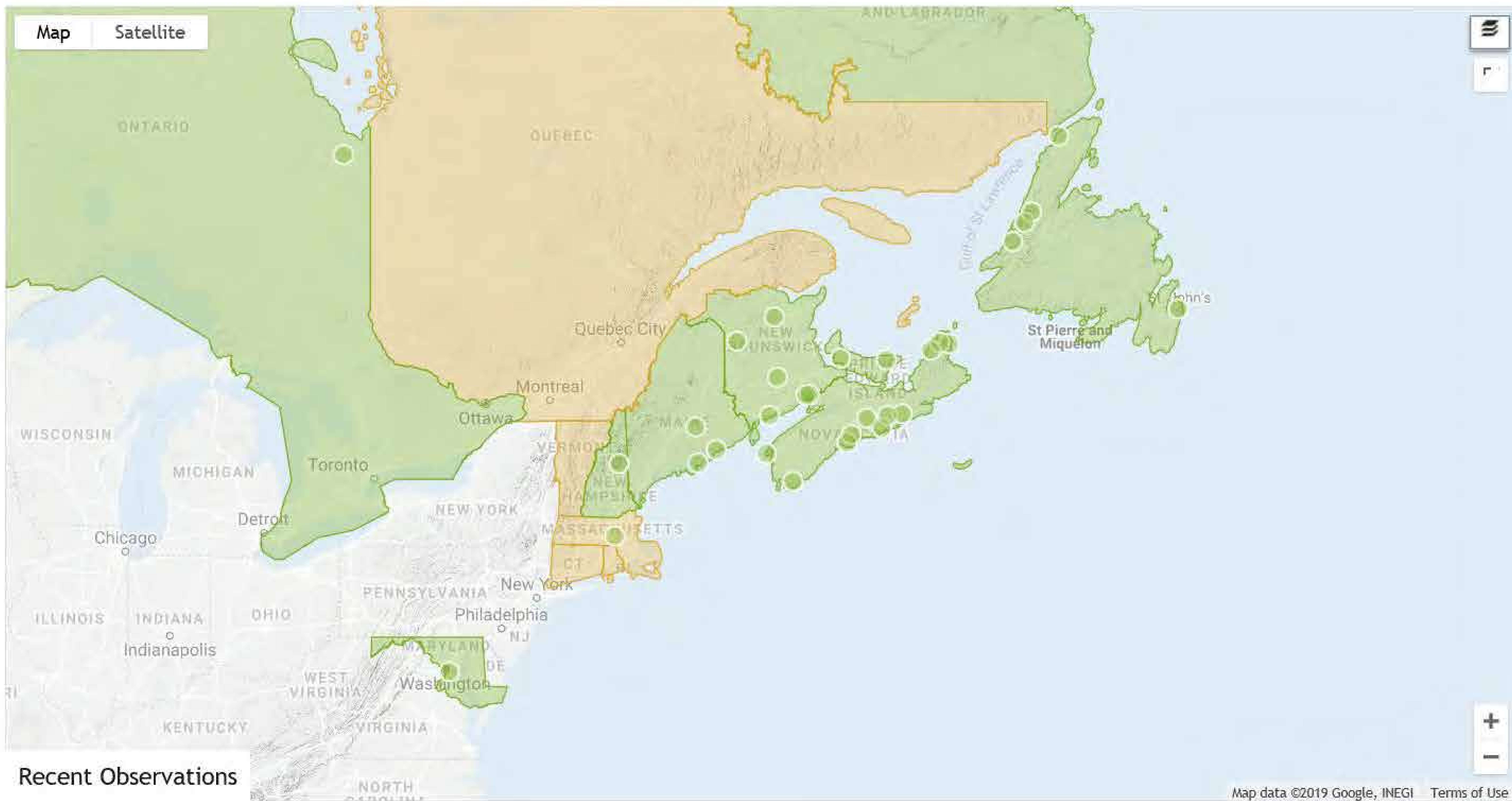
## *Eurybia radula*





# iNaturalist

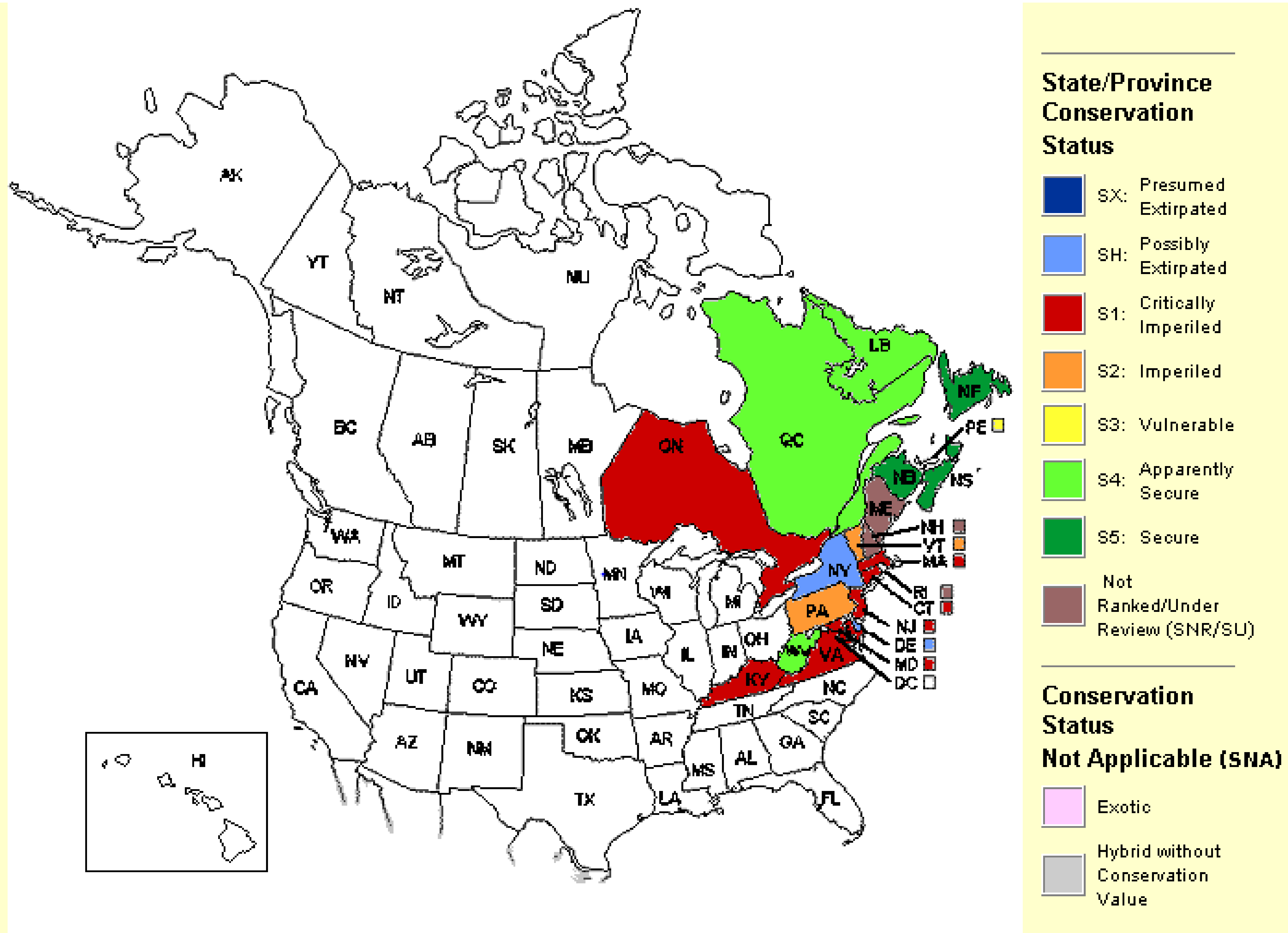
## *Eurybia radula*



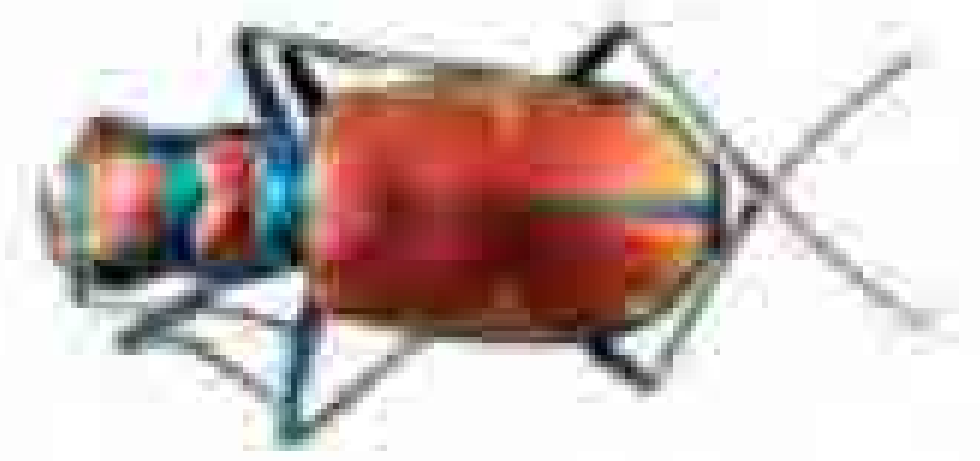


# NatureServe

## *Eurybia radula*



# Potential Global Case Studies



*Symbiota*

Promoting  
Bio-Collaboration



SYMBIOTA INTRODUCTION

SYMBIOTA2 PROJECT

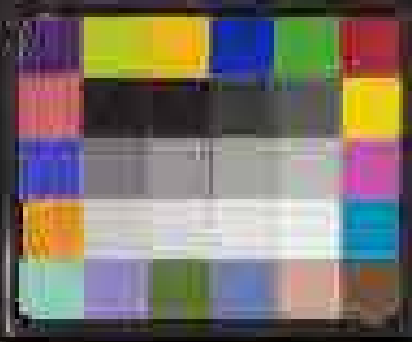
SYMBIOTA PORTALS

DATA MANAGEMENT

IMAGES

SEINET – REGIONAL NETWORKS OF NORTH  
AMERICAN HERBARIA





THE ACADEMY OF NATURAL SCIENCES



Part II

Academy of Natural Sciences of Philadelphia  
NORTH AMERICAN GRAMINEAE AND CYPERACEAE  
PART II  
No. 169  
Carex lupulina

169. Carex lupulina. *Muhl.*  
*var. polystachya. Scho. & Torr. Car. t. p. 337.*  
*Decoy. Car. t. p. XI. p. 166. & XIX. tab. viii. f. 48.*  
*C. gigantea. Rudge, in Lin. Trans. VII. p. 89. tab. x. f. 2.*  
*Muhl. Gram. p. 249.*  
Hab.—Highlands of New-York. Dr. Barratt.

Coll. Asa Gray

Issued: 1835

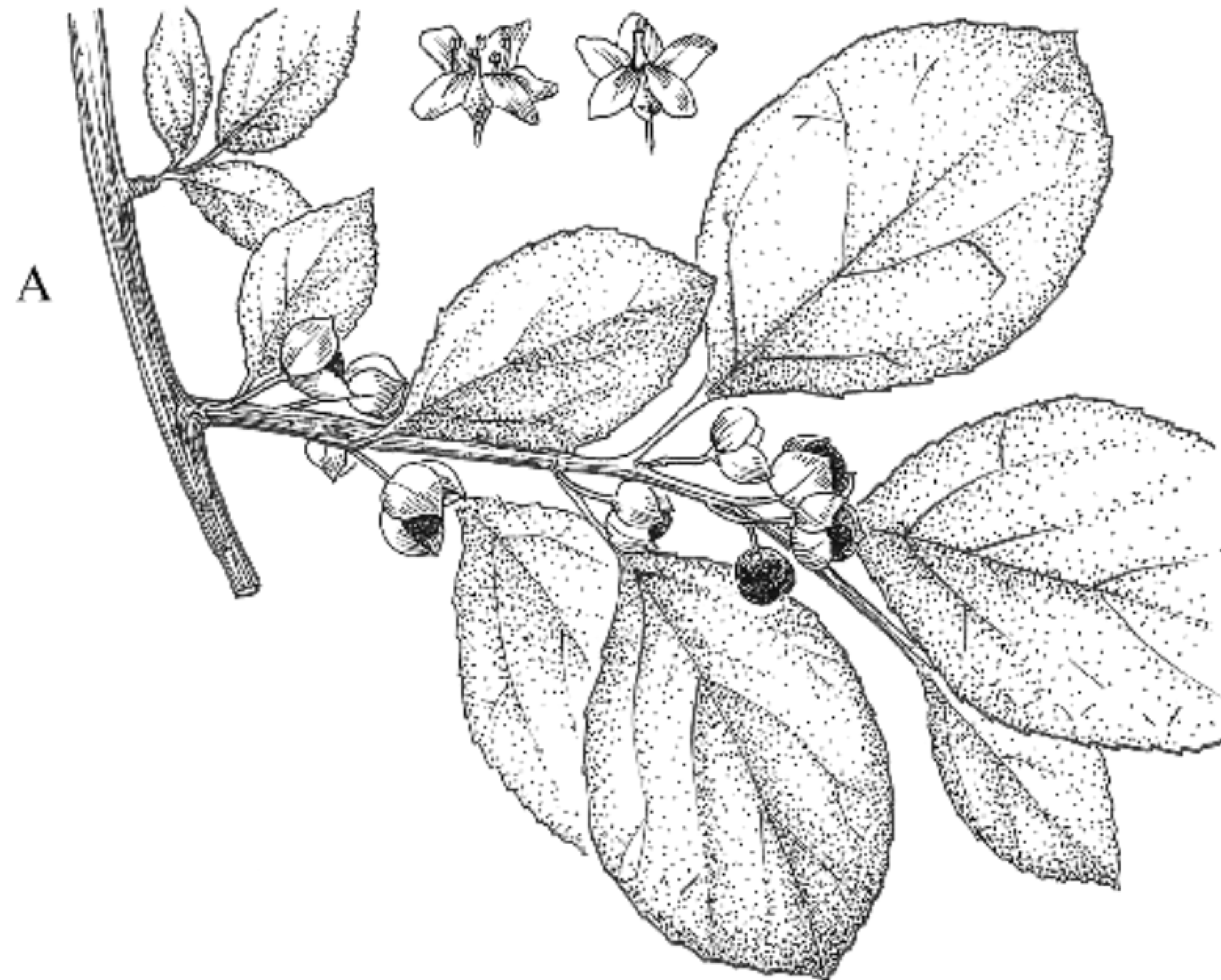
The Academy of Natural Sciences  
Philadelphia, PA USA (PH)  
PH00634718  
ANS PHILA

IMAGED

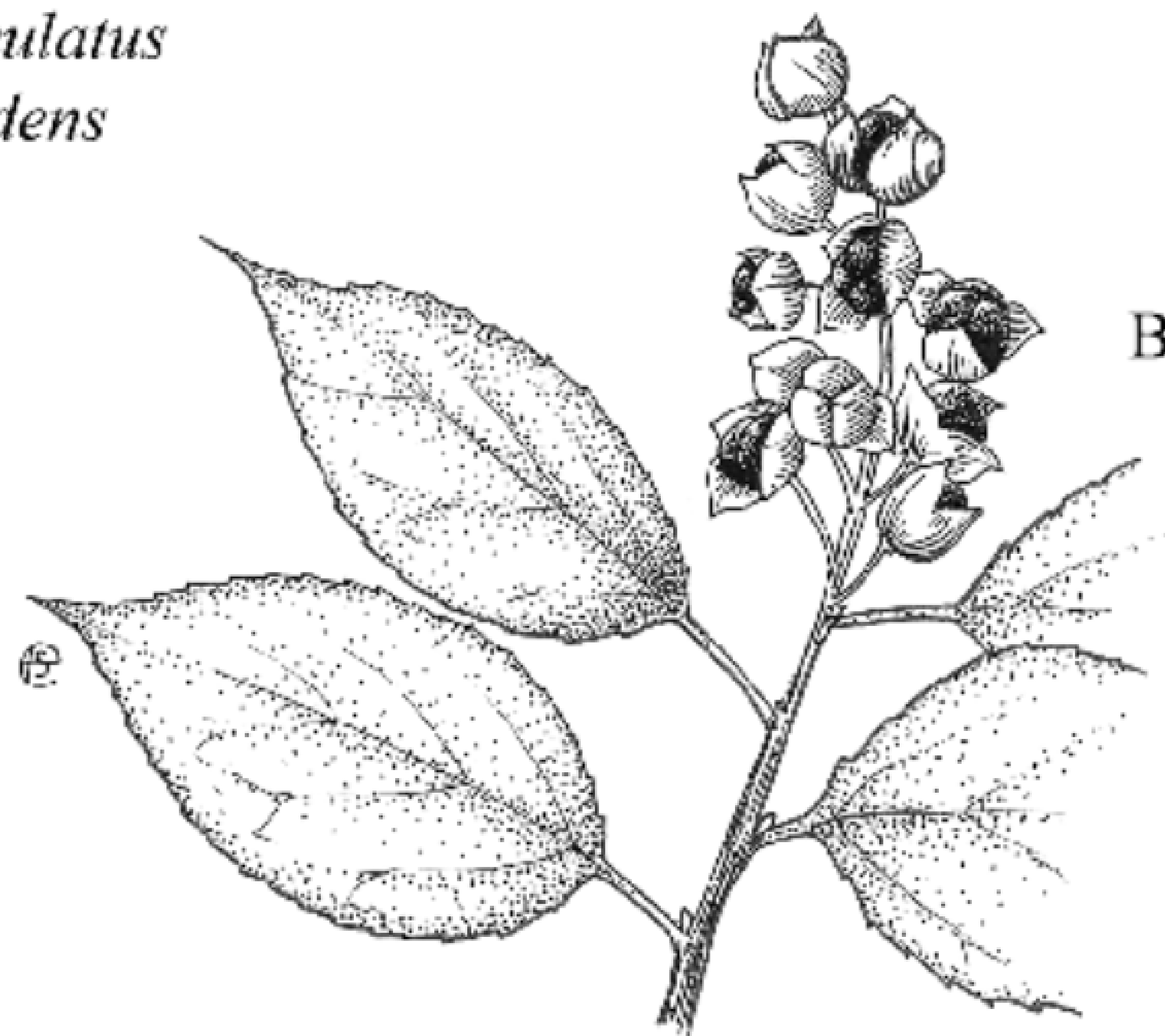
865450

# USDA PLANTS

## *Celastrus*



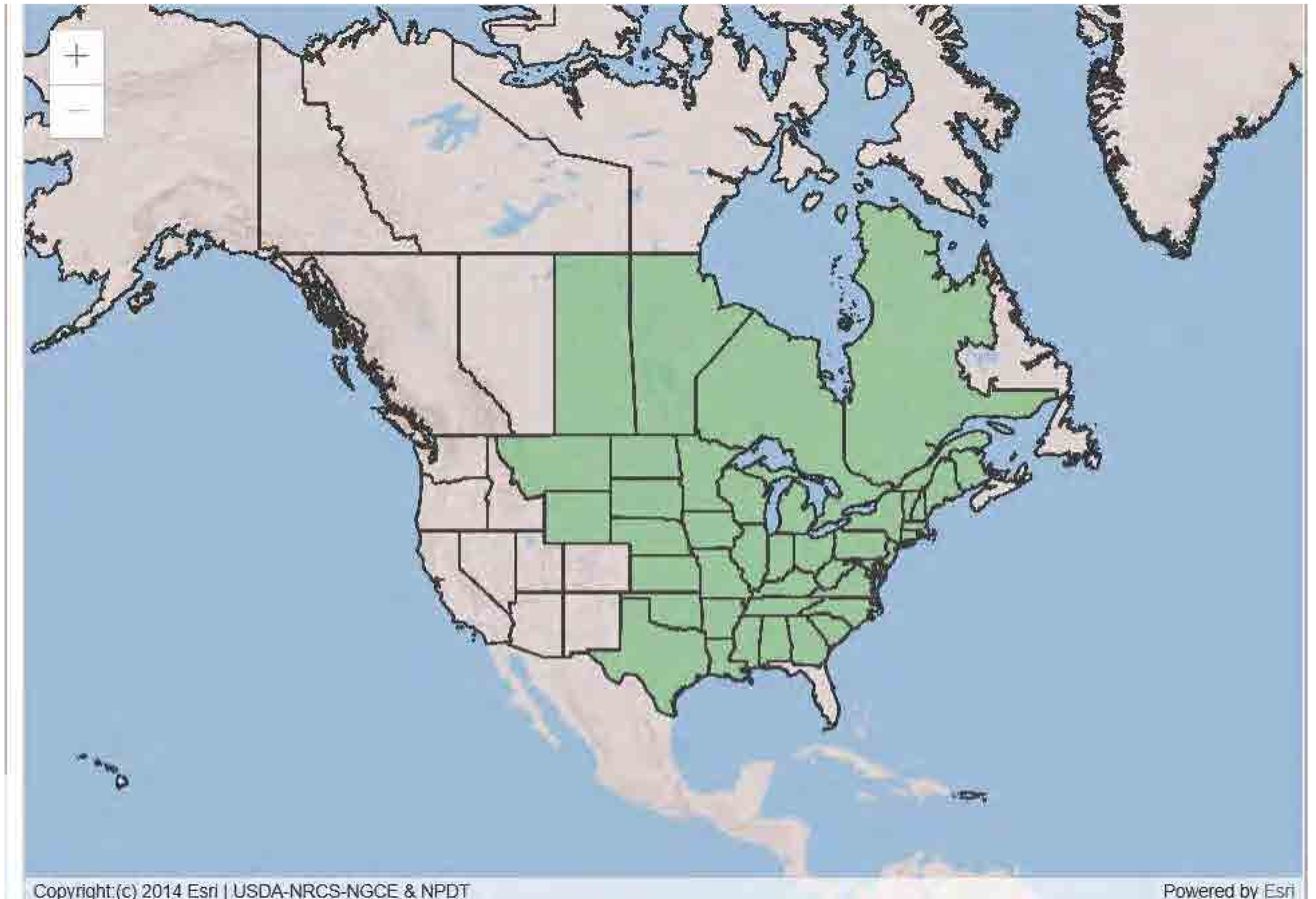
A. *Celastrus orbiculatus*  
B. *Celastrus scandens*





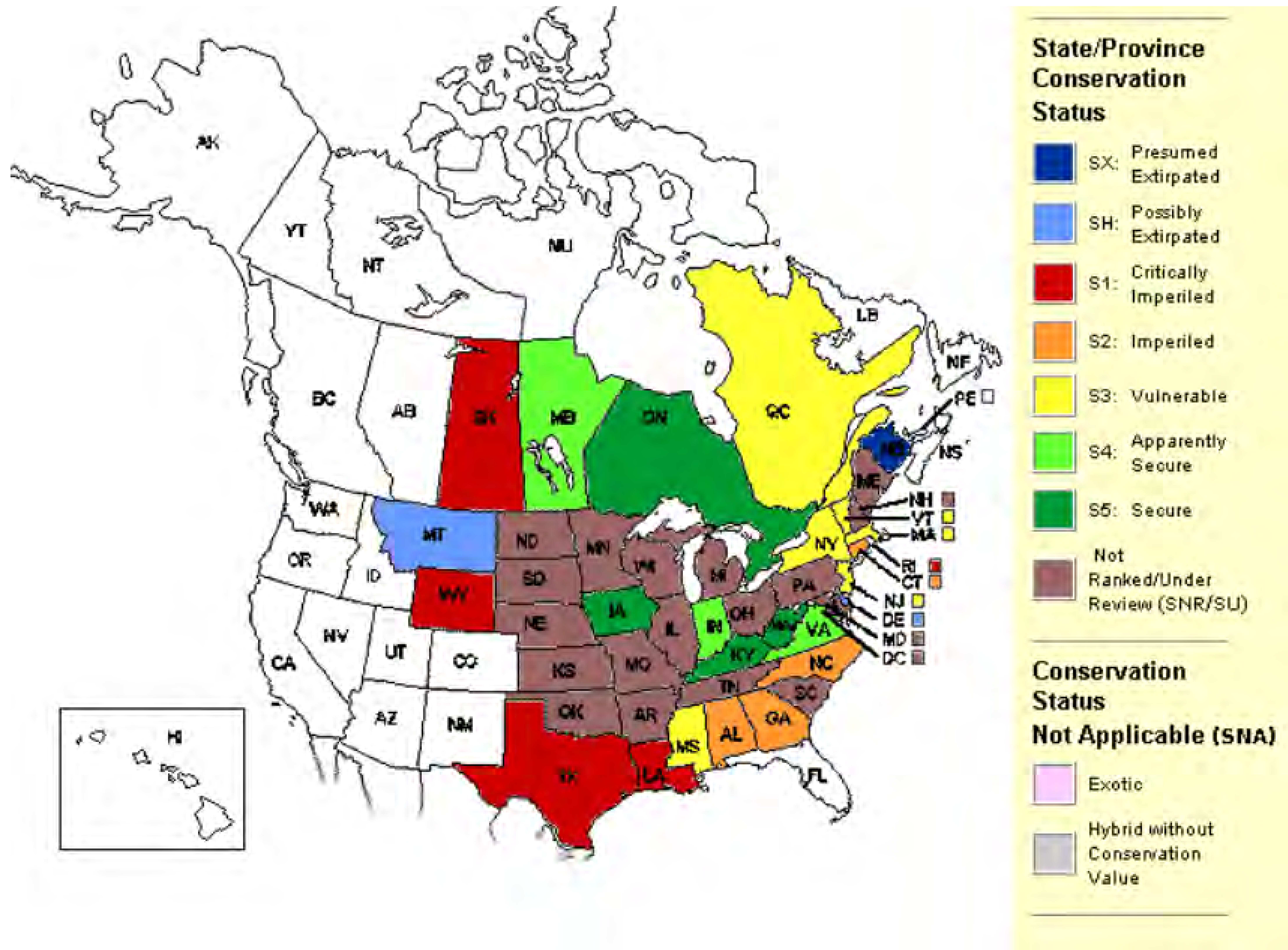
# USDA PLANTS

## *Celastrus scandens*



# NatureServe

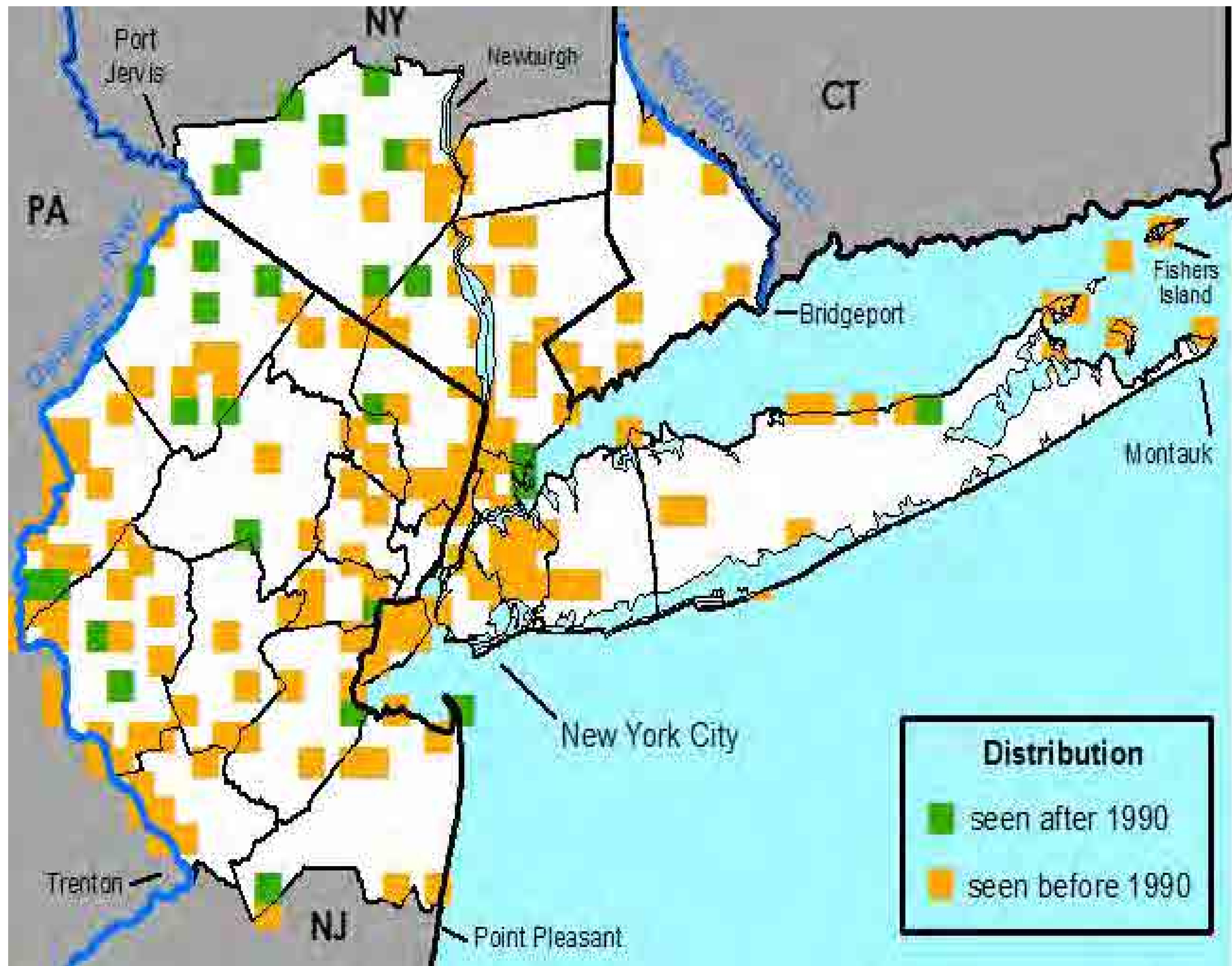
## *Celastrus scandens*





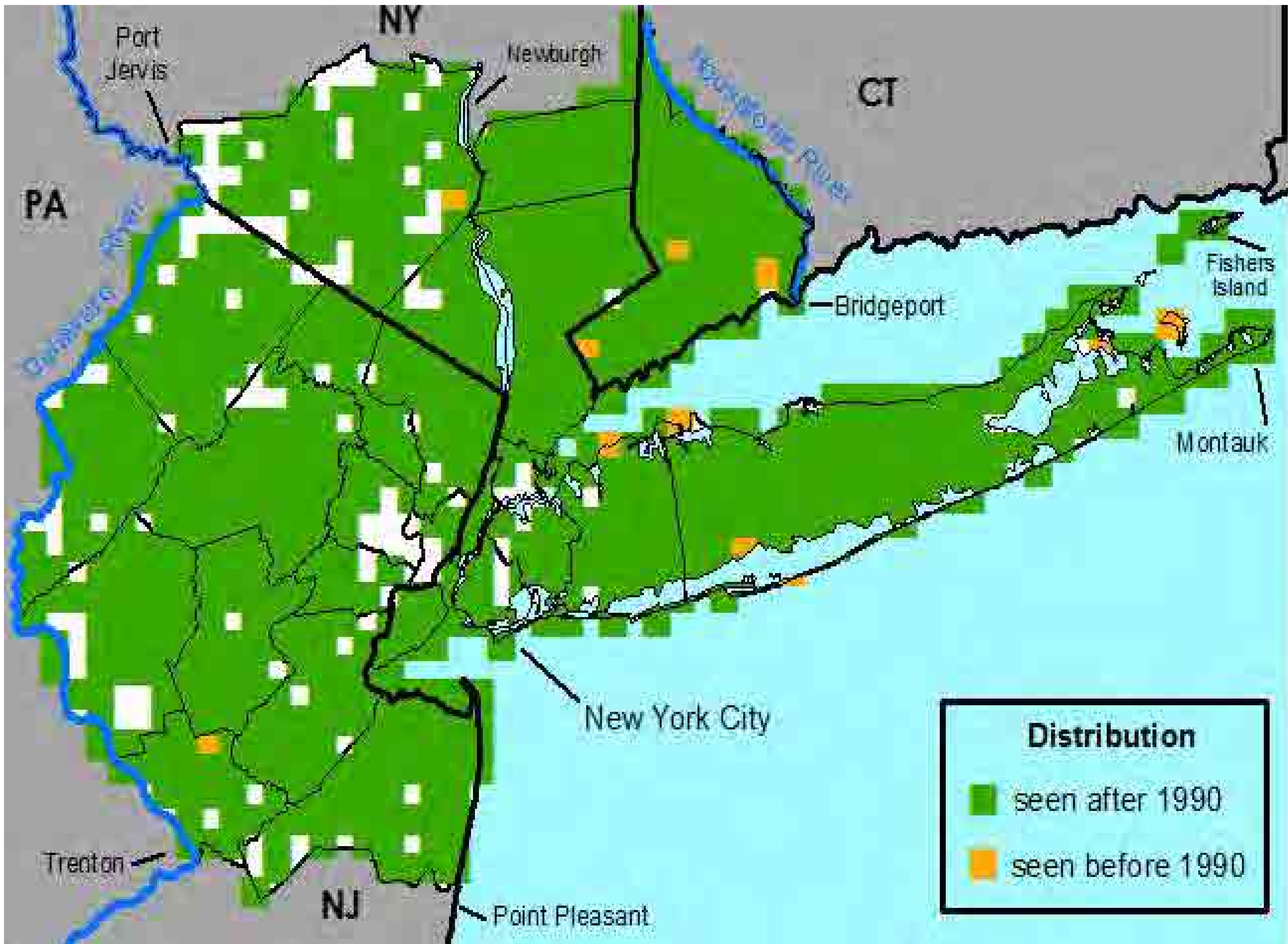
# Forest Service

## *Celastrus scandens* ↓↓↓



# Forest Service

## *Celastrus orbiculatus* ↑↑↑





# Conclusions

- **Further refinements of nativity assignments**
- **Use of state data in reassessing species globally**
- **Incorporation of data deluge**
  - **Historical data (herbarium digitization)**
  - **Current data (observations)**
  - **Vetting**

# Acknowledgements

Academy of Natural Sciences of Drexel  
University: specimen image for slide 75.

Thomas G. Barnes: photo for slide 7.

Robin Buckallew: photo for slide 37.

Nelson DeBarros: photo for slide 39.

Doug Goldman: photos for slides 4, 4, 8, 41, 55,  
56, 65, 66.

Jim Stasz: photo for slide 39.