

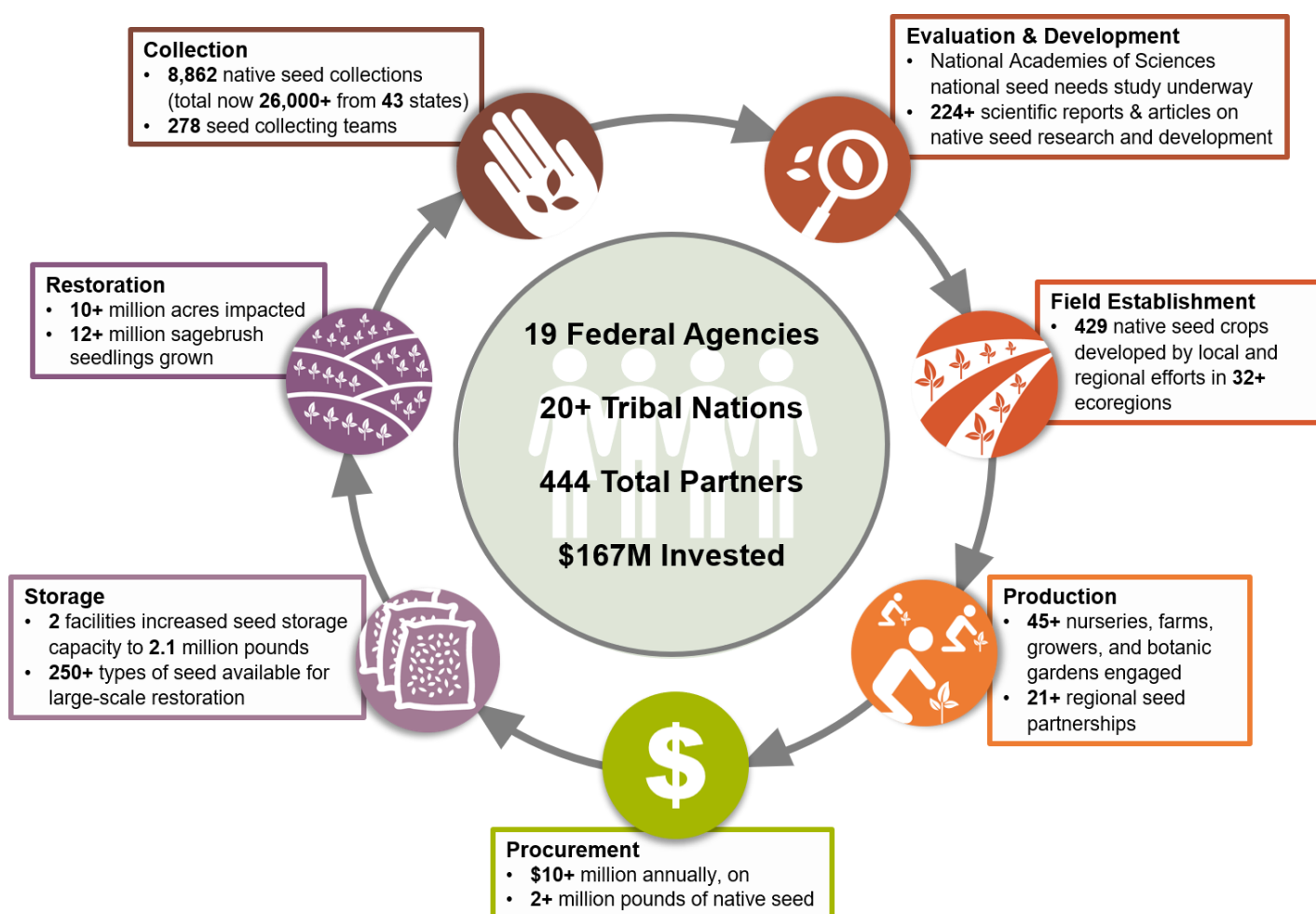
# National Seed Strategy for Rehabilitation and Restoration

PROGRESS REPORT 2015-2020

Native plants are the true green infrastructure we rely upon for healthy, biodiverse ecosystems. They protect us against natural disasters; create wildlife, rare species, and pollinator habitat; and are vital for carbon sequestration. Without native plants, especially their seeds, we do not have the ability to restore functional ecosystems after natural disasters and mitigate the effects of climate change. Investing *now* in coordinated, research-driven native seed production is an efficient and cost-effective risk management strategy.

Federal government agencies and their partners are collaborating to increase the supply of native seeds for restoration through the National Seed Strategy to get the right seed in the right place at the right time.

## 2015-2020 ACCOMPLISHMENTS

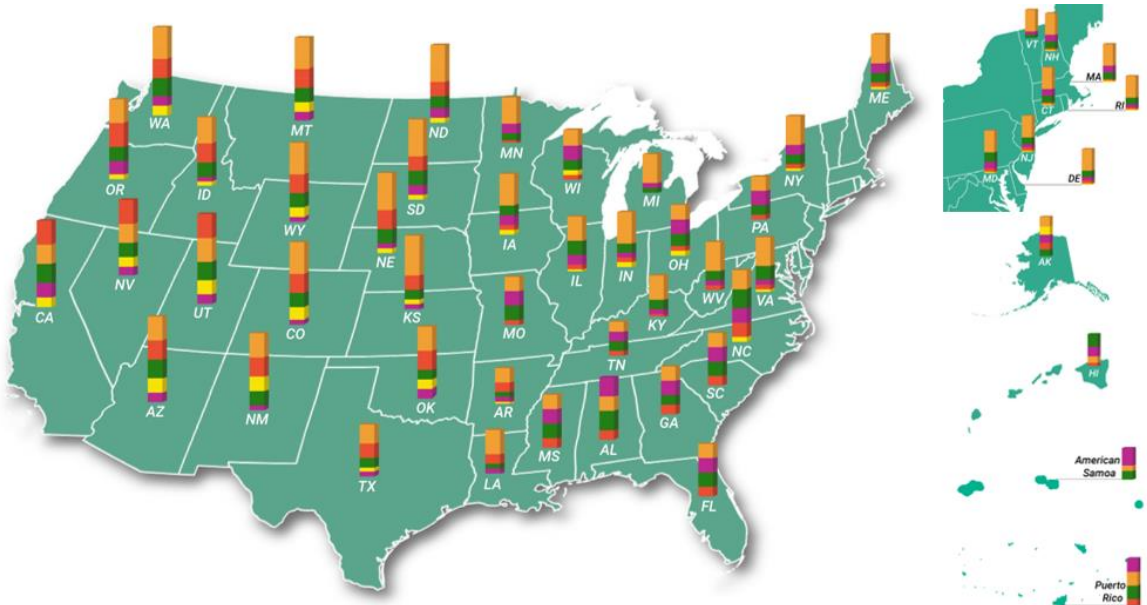


The Seed Strategy charts a course for tribal, state, federal, local and private partners to increase private and public sector coordination on native plant materials development, thereby accelerating the pace and scale of restoration. Success is being achieved through the establishment of nationwide networks of seed collectors, researchers to develop seed, farmers to grow native seed, nurseries and seed storage facilities to supply adequate quantities of appropriate seed, and restoration ecologists who know how to put the right seed in the right place at the right time.

## THE NATIONAL SEED STRATEGY IN YOUR BACKYARD

### Management priorities currently using native plants & seeds

- Wildlife Habitat & Corridors
- Wildfire Rehabilitation
- Invasive Species
- Rare or Endangered Plants and Animals
- Mining Reclamation



## INVESTING IN THE FUTURE

OUR WORK HAS JUST BEGUN! These accomplishments demonstrate how groups of individuals are creatively leveraging funds and other resources to accomplish goals in the Seed Strategy. The National Seed Strategy Business Plan (2015) estimated it would take about \$72 million a year to implement the Seed Strategy. Currently, there are not enough resources for ensuring the availability of biodiverse locally adapted native plants for every ecoregion at the scale of disturbances and needs.

## NEXT STEPS

- Expand economic opportunities for farmers to grow locally adapted native seed.
- Actively engage with Native American Tribes and Alaska Native villages to honor their Indigenous knowledges and ensure culturally important plants are conserved.
- Increase botanical expertise in federal agencies to inform all restoration, rehabilitation and reclamation projects.
- Develop regional “Seed Hubs” with partners who develop, store and deliver locally adapted native seeds.
- Increase research to enhance decisions based on science for every step, from seed collection to restoration.
- Increase public education and awareness on the importance of locally adapted native seed in ecological restoration.

Ensuring the availability of suitable plant materials that America urgently needs is an important, achievable commitment to the health and prosperity of future generations.

## FOR MORE INFORMATION

### EMAIL

[SeedStrategy@blm.gov](mailto:SeedStrategy@blm.gov)

### NATIONAL SEED STRATEGY & BUSINESS PLAN

[www.blm.gov/seedstrategy](http://www.blm.gov/seedstrategy)

### PLANT CONSERVATION ALLIANCE

[www.blm.gov/pca](http://www.blm.gov/pca)

